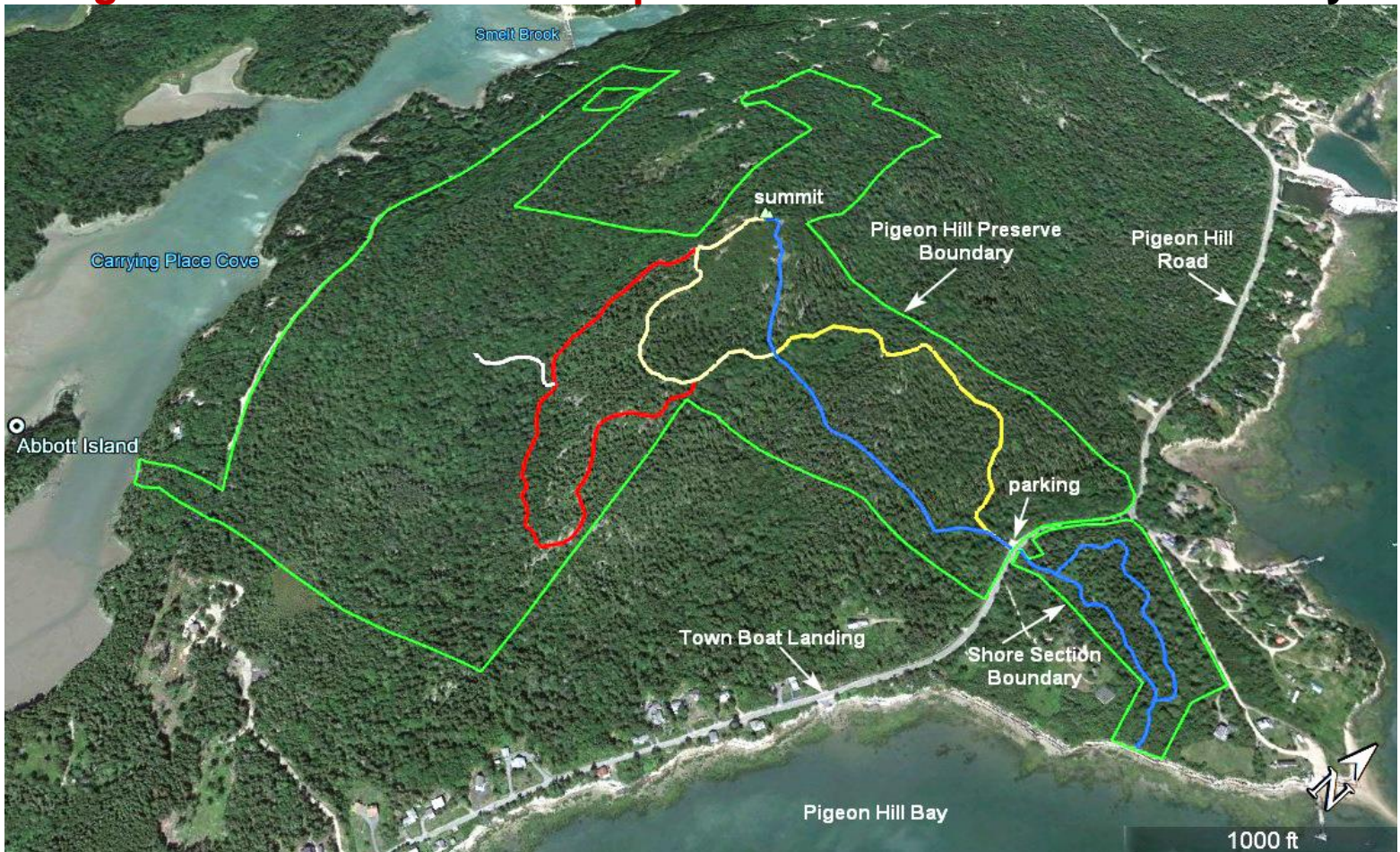


Pigeon Hill Preserve - 3D Map - Downeast Coastal Conservancy



Blue: Historic Trail, 0.4 miles, 250 ft climb
Yellow: Silver Mine Trail, 0.4 miles, 170 ft climb
Yellow: Summit Loop, 0.3 miles, 110 ft climb

Red: Ledge Woods Trail, 0.6 miles, 170 ft climb
White: Glacial Erratic Spur, 1000 ft round trip
Blue: Shore Section Trail, 0.5 miles total

The Pigeon Hill Preserve consists of the 175-acre Hill Section to the West of Pigeon Hill Rd. and the 10-acre Shore Section between Pigeon Hill Rd. and Pigeon Hill Bay to the East.

The Hill Section's 1.8-mile trail system features a figure-eight loop that allows hikers to reach the summit and return without retracing their steps. Hike up the Historic Trail to the Summit and return via the Summit Loop and Silver Mine Trails for the easiest hiking, the most viewsapes and the opportunity to view evidence of some of Pigeon Hill's human history. The Summit Loop and Silver Mine Trails provide the least steep route to the Summit. Explore the Ledge Woods Trail for a more challenging and longer hike. It offers views to the south and open woods with large maple trees along the edge of the western woods. Take the short Glacial Erratic Spur Trail off the Ledge Woods Trail to visit the fun Big Lonely Boulder.

The Shore Section's 0.5-mile trail winds through a beautiful and interesting mixed woods before reaching the shore of Pigeon Hill Bay for a view of Bois Bubert Island and the distant Petit Manan Lighthouse.

Note that you can take Blue trails from the Sea to the Summit or from the Summit to the Sea :-)

- Please practice "CARRY-IN/CARRY-OUT" and "LEAVE NO TRACE" ethics.
- The Pigeon Hill Preserve is only open from dawn to dusk.
- Do not carve graffiti or initials in rocks, ledges, or trees.
- Collecting lichens and other plants is not permitted. Hand picking of berries is permitted.
- Commercial harvesting of timber, plants, berries, or intertidal rockweed is prohibited.
- Hunting is allowed in the Hill Section during hunting season. Wear safety orange in season.
- Hunting is NOT allowed in the Shore Section at any time.
- Always keep dogs under leash or voice control.
- Fires, camping, ATVs and snowmobiles are not permitted.
- Respect neighboring private property and roads. Access is only from DCC trailheads.

Information on DCC Preserves is available on the DCC website where you can also become a member.

<http://downeastcoastalconservancy.org>