



Volunteers remove trash collected along the Wohoa Bay shoreline by boat.

DOWNEAST COASTAL CONSERVANCY

The Downeast Coastal Conservancy (DCC) maintains and protects the Ingersoll Point Preserve and also works cooperatively with land owners to protect other land in coastal Washington County from Steuben to Lubec and up to Calais and Rt 9. This area is part of the last frontier on the Northeast coast of peaceful, untrammelled beauty, including forests, woodlands, wetlands, islands, salt marshes, clam flats, fishing villages and working waterfronts.

DCC is a membership organization whose mission is the conservation of natural habitats and resources of the coastal watersheds, islands and communities of Washington County, Maine, for present and future generations.

Formed in 2009 through the merger of Great Auk Land Trust and Quoddy Regional Land Trust, Downeast Coastal Conservancy brought together two successful land trusts, each with over twenty years of conservation into a single, stronger organization.

To join DCC, make a charitable contribution, or obtain advice and assistance in conserving your land, please contact us.

DOWNEAST COASTAL CONSERVANCY

PO Box 760
Machias, ME 04654

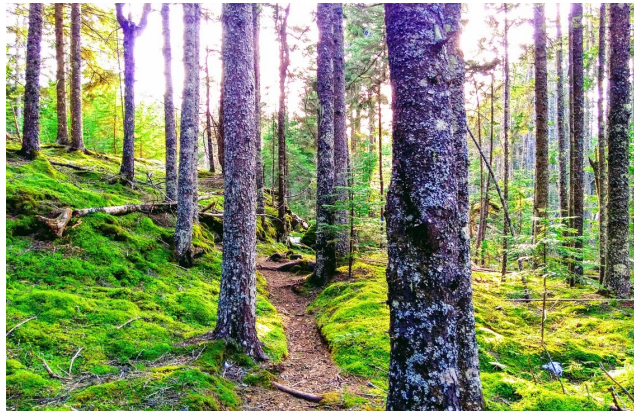
Telephone: 207-255-4500
www.DowneastCoastalConservancy.org
info@downeastcoastalconservancy.org



DOWNEAST
COASTAL
CONSERVANCY

© June 2018 Downeast Coastal Conservancy

INGERSOLL POINT PRESERVE



HIKE ADDISON!

INGERSOLL POINT PRESERVE

The Ingersoll Point Preserve consists of 145 forested acres with over one mile of shoreline on Carrying Place Cove and Wohoa Bay in South Addison. The property was acquired during 2009-2011 as three separate, adjoining parcels. The preserve began when Dorothy Adler generously donated 88.5 acres. In honor of her contributions, the main trail is named after her. Two other parcels were acquired through Land for Maine's Future and North American Wetland Conservation Act funds. The three parcels were combined into one conservation land to protect wildlife habitat and traditional recreational use.

HISTORY

The 1861 and 1881 Washington County Atlas show a homestead with the name W. Ingersoll on the preserve. There is at least one cellar hole near the eastern shore, surrounded by lilacs. Small remnants of stone foundation are also visible.

NATURAL RESOURCES

Most of the preserve is a Spruce-Fir Maritime Forest, however two other forest types are present, Spruce-Fir-Cinnamon Fern Forest and Spruce-Larch Wooded Bog. Both are wooded wetlands. Spruce-Larch Wooded Bog community type is also called Black Spruce Bog and is usually dominated by black spruce and larch, but at Ingersoll Point, neither species is present. A variety of mosses and lichen can be found.

A small section of Beach Strand occurs along the slight cove on Wohoa Bay. Two small areas of shrubland are

dominated by raspberry, holly, roses and meadow-sweet, with yarrow, goldenrod and asters.

The undeveloped shoreline provides buffer for intertidal habitats used by shorebirds, migratory and wintering waterfowl such as black ducks, and wading birds including great blue heron. Mudflats are clam and marine worm habitat and feeding areas for migratory birds. Rockweed beds in the intertidal zone on Wohoa Bay are home to small creatures and serve as nurseries for marine species.

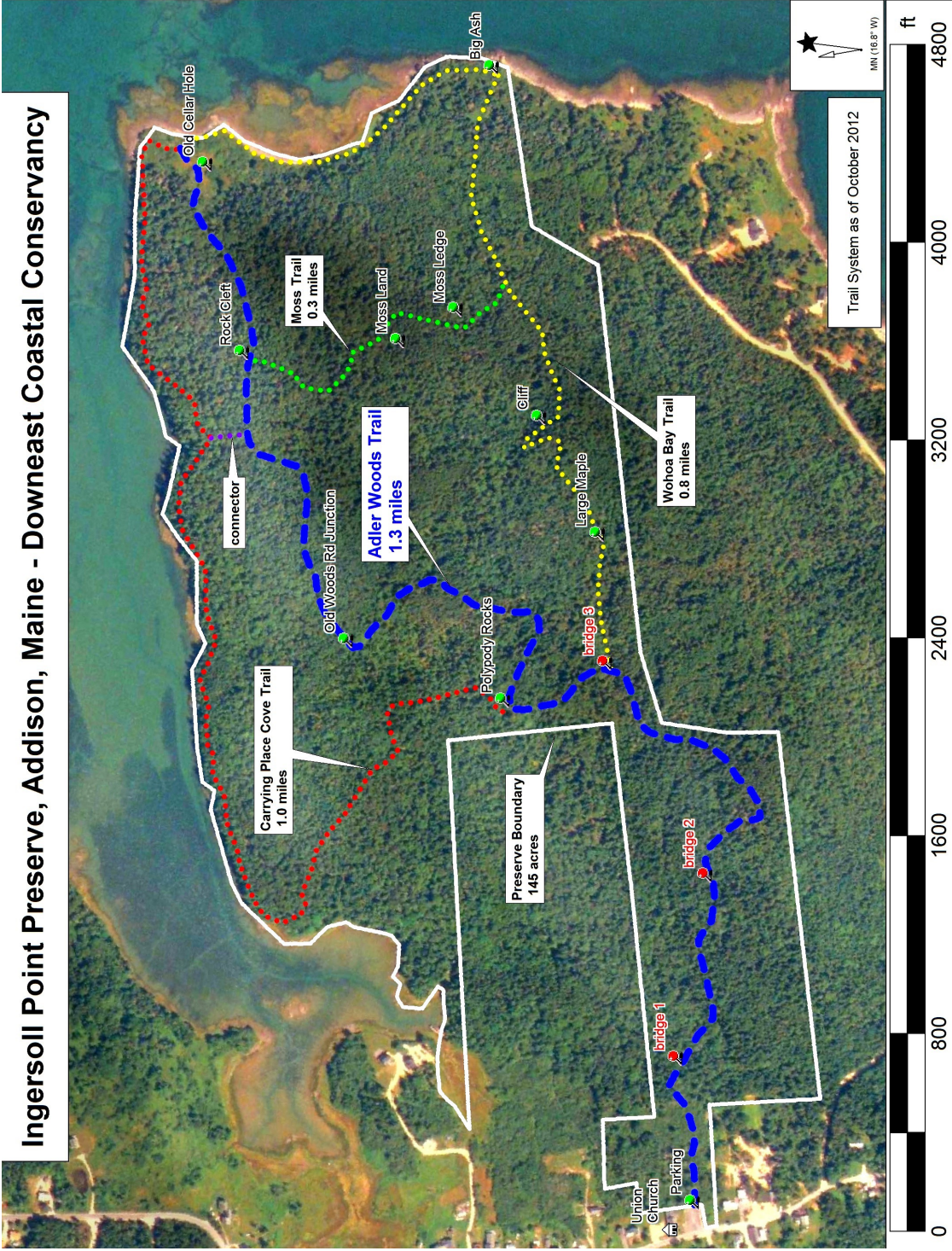
PRESERVE GUIDELINES

Thank you for your stewardship and caring for Ingersoll Point for all to enjoy. The Preserve is open from dawn to dusk. Help us protect this special place by observing the following guidelines:

- Please practice "carry-in/carry-out" and "leave no trace" ethics;
- Please stay on the trail. Moss, lichen and marsh soil are fragile;
- Do not carve graffiti or initials in rocks, ledges or trees;
- For your safety, wear safety orange during hunting season;
- Keep dogs on a leash or under voice control at all times;
- Fires, camping, ATV's and snowmobiles are not permitted;
- Please respect neighboring private property and roads. Public access is from the parking area behind the church only.

Looking back at the Preserve from the Point on Wohoa Bay.





TRAIL INFORMATION

The Ingersoll Point Trail network consists of just under 3.5 miles of trail. We’ve been surprised at just how beautiful and varied each of the trails are. It’s easy to spend several hours hiking and relaxing on the beach enjoying the view. Be sure to sign the trail registry and let us know what you think!

Adler Woods Trail (1.3 miles, one way)

The Adler Woods Trail starts from the back of the Union Church parking lot by the Ingersoll Point Preserve sign. After a short walk through the alder bushes, you will soon find yourself in the middle of lush green forest carpeted with moss, lichen and other plant species. The trail passes by the cellar hole of the Ingersoll homestead before opening up to the beach at Ingersoll Point. From the beach you will find beautiful views across Wohoa Bay to Beals and other islands. The Adler Trail is blazed with blue.

Wohoa Bay Trail (0.8 miles, one way)

The Wohoa Bay Trail breaks away from the Adler Woods Trail at the 3rd bog bridge. The Wohoa Bay Trail parallels to the south of the Adler Woods Trail before opening onto the beach at Wohoa Bay. The trail then continues along the beach where it connects with the Adler Woods Trail and Carrying Place Cove Trail. The Wohoa Bay Trail is blazed with yellow.

Carrying Place Cove Trail (1.0 mile, one way)

The Carrying Place Cove Trail forks off of the Adler Woods Trail at Polypody Rock, where it travels through forest until it reaches the shore at Carrying Place. From there, it follows the shoreline to the beach, where it connects with the Adler Woods Trail and the Wohoa Bay Trail. The forest land along the Cove is quite different than the interior trails. The Carrying Place Cove Trail is blazed with pink.

Moss Trail (0.3 miles, one way)

The Moss Trail is a short but beautiful connector trail between the Wohoa Bay Trail and the Adler Woods Trail, this trail is green! The Moss Trail is a great area to enjoy the woods and the lush moss and lichen landscape. The Moss Trail is blazed with green.

GETTING TO INGERSOLL POINT

From U.S. Route 1, turn South onto ME-187/Indian River Road at Wild Blueberry Land. In 2 miles, turn right on Wescogus Road. Continue about 1.5 miles and turn left on East Side Road. Follow East Side Road about 6 miles and turn right onto Mooseneck Road. Continue on Mooseneck Road to the Union Church, which will be on your left in about 1 mile.

Trailhead and parking is in the back of the Union Church parking lot. Look for the Ingersoll Point Preserve sign.

Thank you for helping preserve Ingersoll Point for current & future generations!